
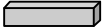



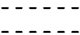
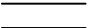






Appendix D

Proposed Improvements Exhibits at Intersections

Proposed Improvements Randall Road Route 529

LEGEND

-  Existing Bus Stop
-  Propose Bus stop and shelter
-  Propose Bus stop with Sign Post
-  Propose Bus Stop Landing (Tier 1)
-  Propose Bus Stop Landing (Tier 2)
-  Existing crosswalk
-  Propose Crosswalk/Pedestrian Signals
-  Propose ADA Access Ramp
-  Propose walkway or sidewalk (Tier 1)
-  Propose walkway or sidewalk (Tier 2)
-  Propose Bus stop and shelter (Tier 2)

Judicial Center—Existing SB 1 & 1A, NB 13 & 13A



Tier 1: No work proposed. Existing stop locations remain

Tier 2: Incorporate a canopy to serve as a bus shelter into the master planning of Judicial Center developments consistent with existing architecture

IL 38—Existing SB 2A and Relocate NB 12



Tier 1: Relocate Existing NB 12, add shelter, sidewalk, crosswalk. Add Shelter to Existing SB 2A

Tier 2: Add sidewalk to connect to destination

Bricher—New SB 3A and NB 11B-(Tier 2)



Tier 1: No proposed improvements

Tier 2: Add new NB and SB stops; add sidewalks and crosswalks. At SB 3A, walkway will need to be bridged over existing culvert.

Geneva Commons –Relocate SB 3 and New NB 11A stops



**Tier 1: Move Existing SB 3 stop inside Geneva Commons. Install a sign on a post. Add NB 11A stop.
Tier 2: No Improvements proposed. Long term corridor improvements may move these two stops back onto Randall Road.**

Delnor Hospital—New SB 4A and Relocate NB 11 stops



Tier 1: Relocate Existing NB11 stop to Delnor Dr, Add bus shelters and add sidewalk where required to connect to existing sidewalk.
Tier 2: No Improvements proposed.

Fargo Blvd— New SB 5A and NB 9A stops —(Tier 2)



Tier 1: No Improvements proposed

Tier 2: Add New NB and SB stops, Add bus shelters, add walkway from bus stop to connect to existing sidewalks.

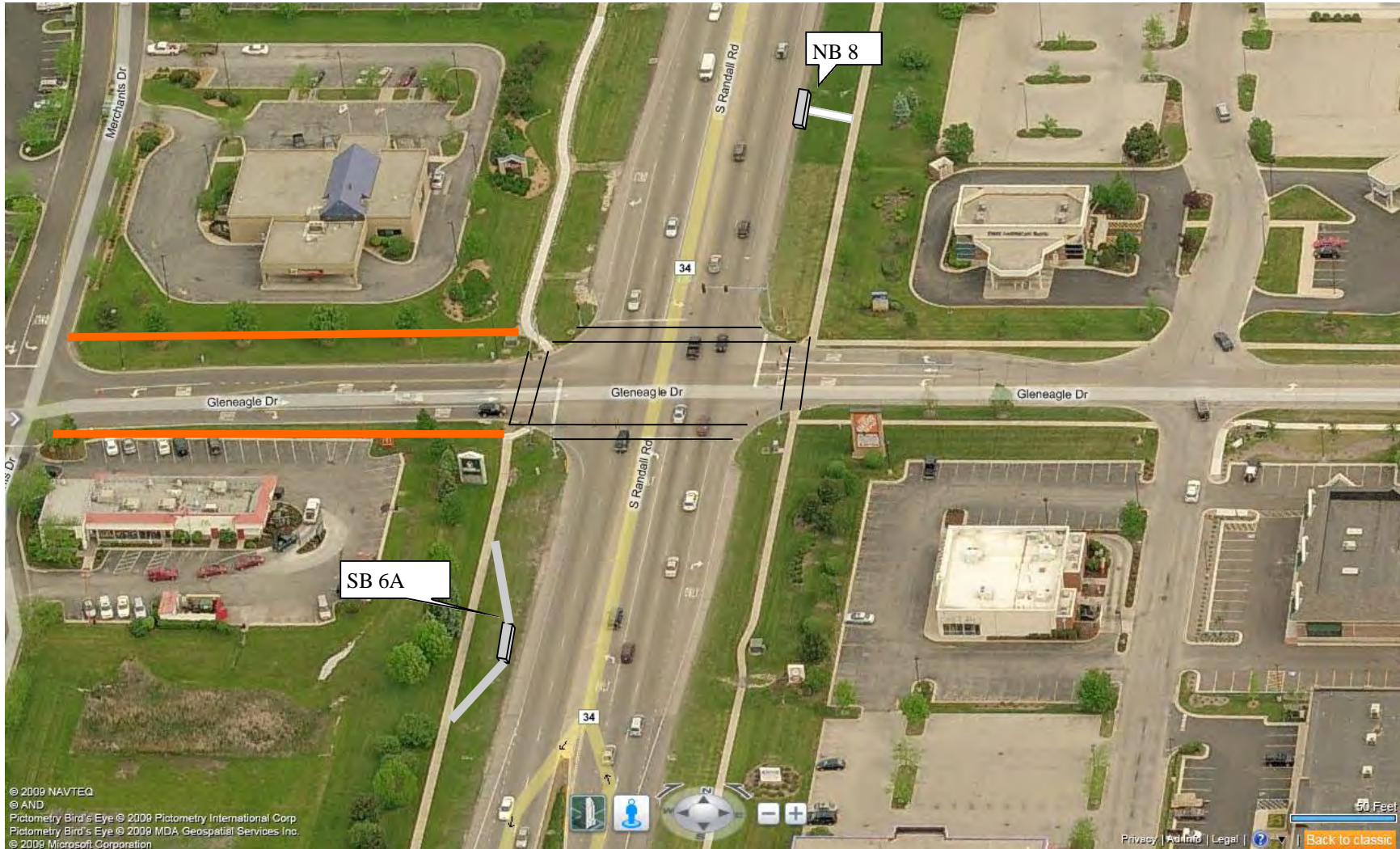
Christina Ln—Existing SB 5 and Relocate NB 9 stops



Tier 1: Relocate existing NB 9 stop, add bus shelter, add crosswalks and add walkway to connect to existing sidewalk. Add Bus shelter to existing SB 5 stop.

Tier 2: Add sidewalks in NW and SW quadrant to connect to existing sidewalks.

Gleneagle Dr –Existing SB 6A and NB 8



- Tier 1:** Add bus shelter to existing stops, add crosswalks and walkway to connect to existing sidewalk. At SB stop, transition walkway to bridge over exist ditch.
- Tier 2:** Add sidewalks in NW and SW quadrant to connect to existing sidewalks.

Fabyan Pkwy- New SB 6B and NB 8A stops (Tier 2)



Coordinate with County on future Fabyan Pkwy's intersection improvement scheduled construction in 2012.

Tier 1: Install a sign post stop for both direction.

Tier 2: Add sidewalks in the SE quadrant, add walkways to bridge over existing culvert and connect to existing sidewalks

Mill Street—Existing SB 6 and NB 7—Relocate



Tier 1: Relocate existing bus stops NB and SB to meet Pace Bus Stop Location Guidelines, construct bus shelters, add crosswalks and access ramps at all 4 corners of the intersection. Due to steep ditch at SW quadrant, recommend walkway be retained to cross over ditch.
Tier 2: No Improvements proposed.

McKee Street—Existing SB 7 and NB 6—Relocate



© 2009 NAVTEQ
© AND
Pictometry Bird's Eye © 2009 Pictometry International Corp.
Pictometry Bird's Eye © 2009 MDA Geospatial Services Inc.
© 2009 Microsoft Corporation

Tier 1—Build bus shelters and relocate exist stops to meet Pace Stop Location Guidelines, add crosswalks, construct walkway to connect to existing sidewalks.. AT SB 7, there exists a big slope and ditch, culvert may be extended or build sidewalk to bridge over ditch area
Tier 2—No Improvements proposed.

Wilson—Existing SB 8 and New NB 5A stops



Tier 1: Due to right hand turn lane, New NB 5A stop placed prior to the start of the right hand turn. Add bus shelter, walkway and crosswalk to connect to existing sidewalks. Relocate existing SB8 to meet Pace standards and add walkway to connect to existing sidewalks.

Tier 2: No improvements at this time.

Main—New SB 8A Stop and Relocate NB 5



Tier 1—Remove existing NB 5 stop due to the proximity of the proposed mid block stop between Wilson and Main Street, however, install sidewalks to connect to mid block stop, add sidewalk, crosswalk and access ramps north of Main St.

Tier 2—Coordinate with future development to install potential new SB stop- requires further evaluation at that time

Mooseheart—Existing SB 9 and propose new NB 4A stop (Tier 2)

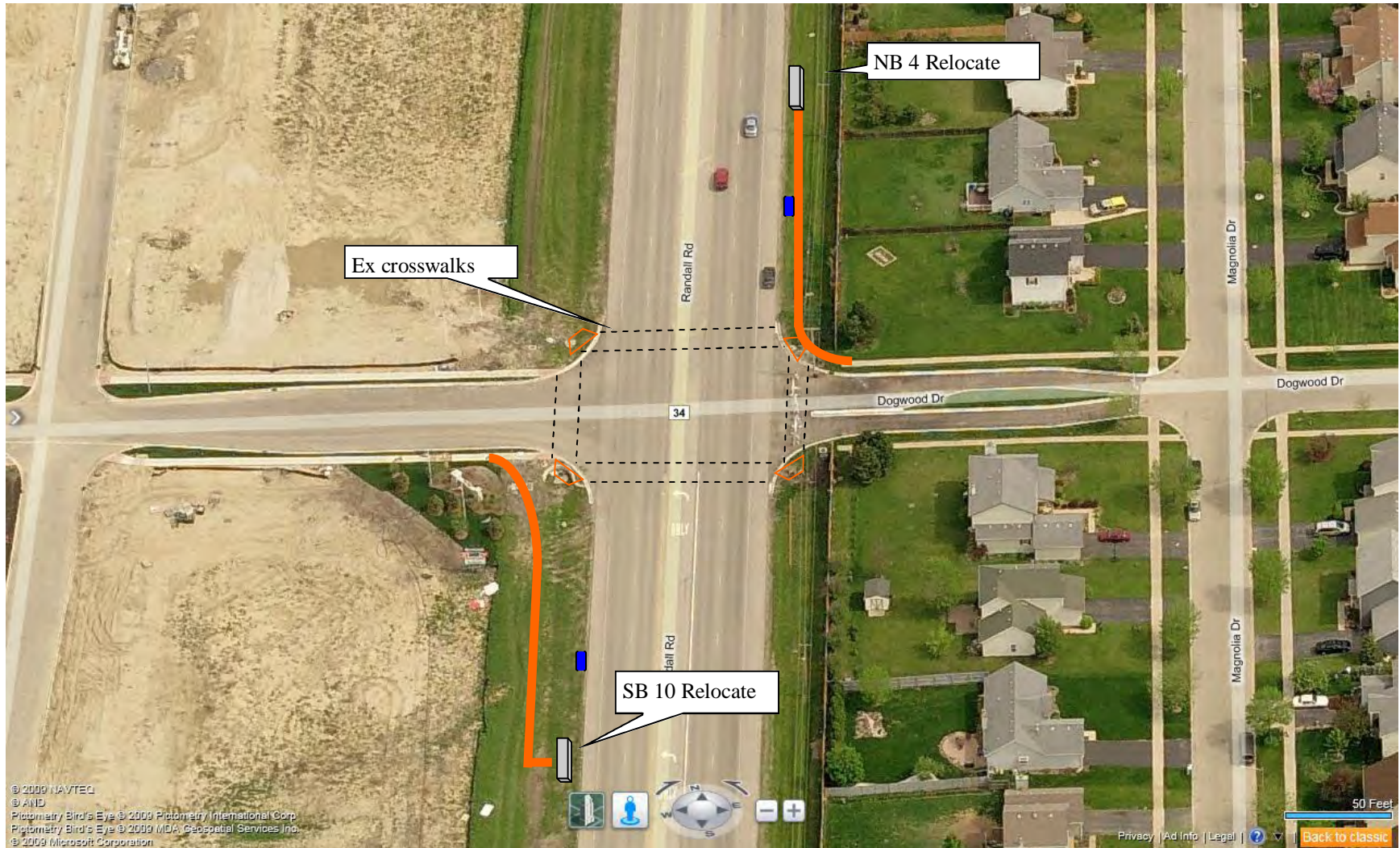


Tier 1: Leave existing stop SB “as is” until further development occurs near the intersection—no improvements recommended

Tier 2: Add new NB stop and coordinate with future developments

Note: Kane County Jurisdiction ends at this intersection from the North

Dogwood Dr—Existing SB 10 and NB4— Relocate stops



Tier 1: Relocate existing stops to meet Pace Guidelines, add bus shelters.

Tier 2: Add sidewalks at both directions and ADA access ramps at all 4 corners. It shall be coordinated with the development of the NW and SW quadrants

Oak Street—Existing SB 11 and NB 3—Relocate stops



Tier 1: Existing Stops are too close to intersection—relocate to the north in accordance to Pace Standards, add sidewalks at the NE quadrant to connect to existing sidewalks

Tier 2: Coordinate with development at SW corner to install public sidewalks and SB 11 may be relocated to the farside

Ice Cream Dr—Existing SB 12 and NB 2 stops



- Tier 1:** Coordinate with County on the I-88 widening project at Randall Road, may move Ex SB 12 to farside.
- Tier 2:** Add landings and bus shelter to existing stops, add connection sidewalks and crosswalks and access ramps to intersection in both direction

Sullivan Rd— Existing SB 13 and NB 1 stops



Tier 1: Maintain location of existing NB and SB stops, add bus shelters, add sidewalks, crosswalks, and access ramps.

Tier 2: No proposed improvement at this time.